



HIJAUAN ENKLAF

((FREEHOLD))

3-STOREY SEMI DETACHED

Wide Windows for Enhanced Natural Lighting

Premium Finishing

Private Lift

DISTINCTIVE CHARACTERS IN SUBLIME ELEGENCE

10 RESIDENCE BUILD WITH LAVISH FINISHING

Well-connected via the **NKVE Expressway & Jalan Meru**

Neighbouring **Setia Eco-Park & Setia City Mall**

GPS coordinates **3.115937, 101.467788**
 **HIJAUAN ENKLAF**



For Further Information, Kindly contact us at

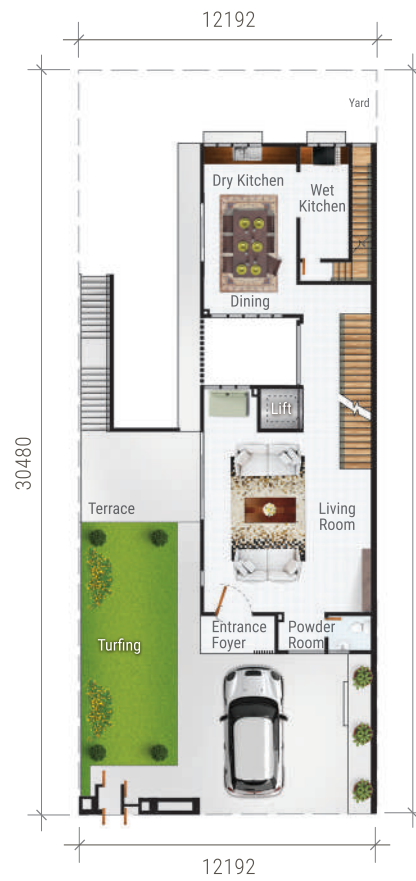
012-236 1154 • 013-391 7634 • 018-243 6285 • 017-672 4923 • 013-250 4380 • 012-659 5515

WIDE WINDOWS FOR ENHANCED NATURAL LIGHTING • PREMIUM FINISHING • PRIVATE LIFT

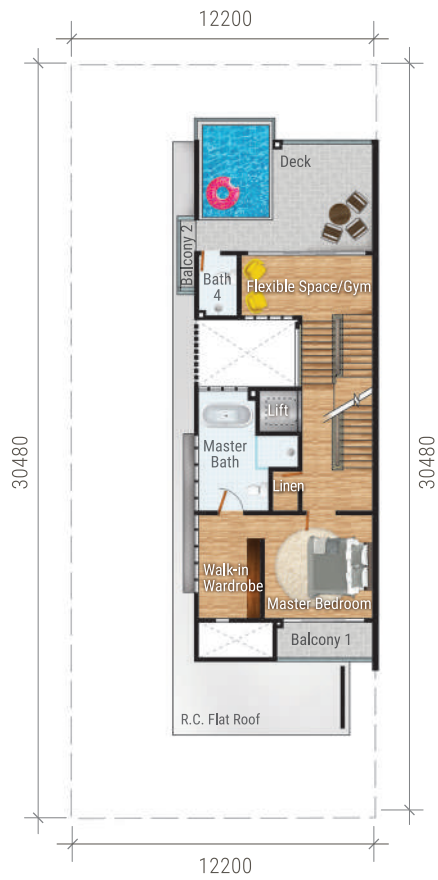
LOWER GROUND FLOOR



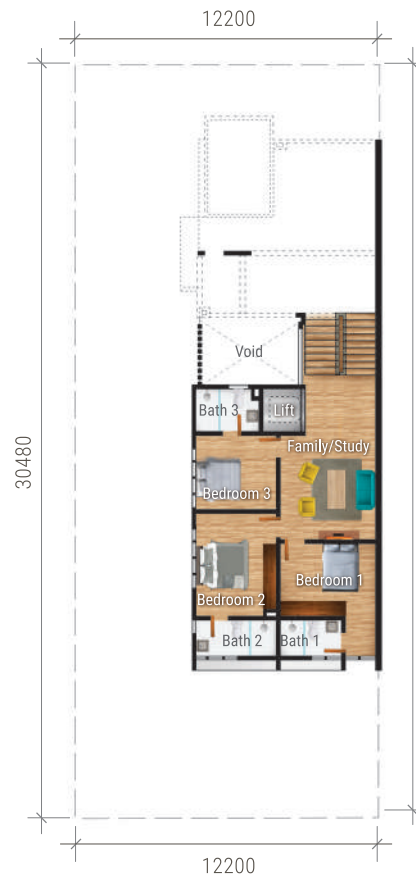
GROUND FLOOR



FIRST FLOOR



SECOND FLOOR



PKNS A Multi-Award Winning Developer Awarded By



In Practice of Excellence
International Business Review
AWARDS 2009



Best SDC 2010



Brand Laureate
Top 10 Masters Award



Global Leadership
Awards 2011



WINNER OF THE PRESTIGIOUS
BCI ASIA TOP 10 PROPERTY
DEVELOPERS AWARD
2 YEARS RUNNING



A Prestigious Development By
PKNS
PERBADANAN KEMAJUAN NEGERI SELANGOR

SELANGOR STATE DEVELOPMENT CORPORATION

Northern Region Property Sales Division, 2nd Floor, Shah Alam PKNS Complex, Persiaran Tasik, 40505 Shah Alam, Selangor.
Tel: +603 - 5519 2211